

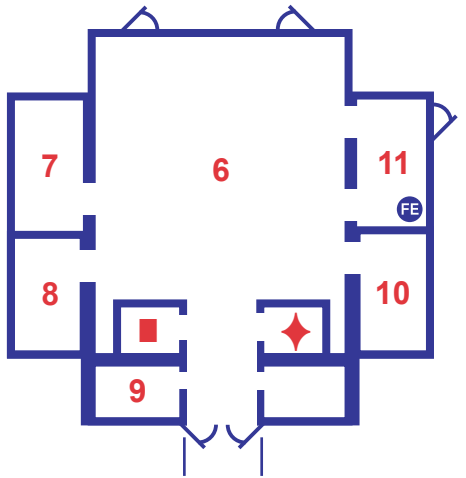


the art of living your faith

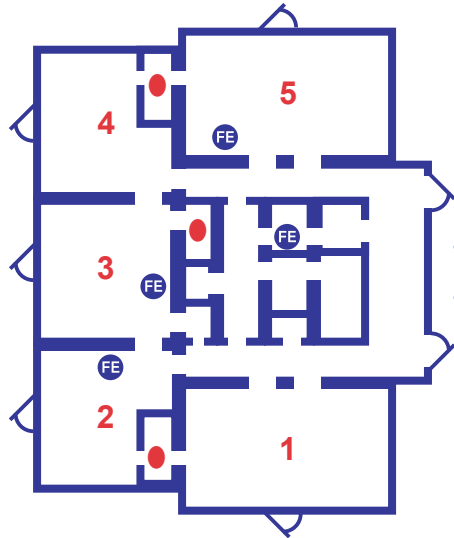
Church T 919 286 2273  
F 919 416 9529  
[www.stlukesdurham.org](http://www.stlukesdurham.org)

Johnson Hall

- 6. Fellowship Hall
- 7. Children's Chapel/Musikgarten
- 8. Storage
- 9. Choir Vesting
- 10. Music Room
- 11. Kitchen
- Women's Restroom
- ◆ Men's Restroom
- FE Fire Extinguisher



Designated Assembly  
Area in Playground



Gray Building

- 1. Godly Play Classroom Grades K-5
- 2. Nursery
- 3. Youth Room (EYC)
- 4. Classroom LEAP
- 5. Classroom LEAP
- Unisex Restroom
- FE Fire Extinguisher

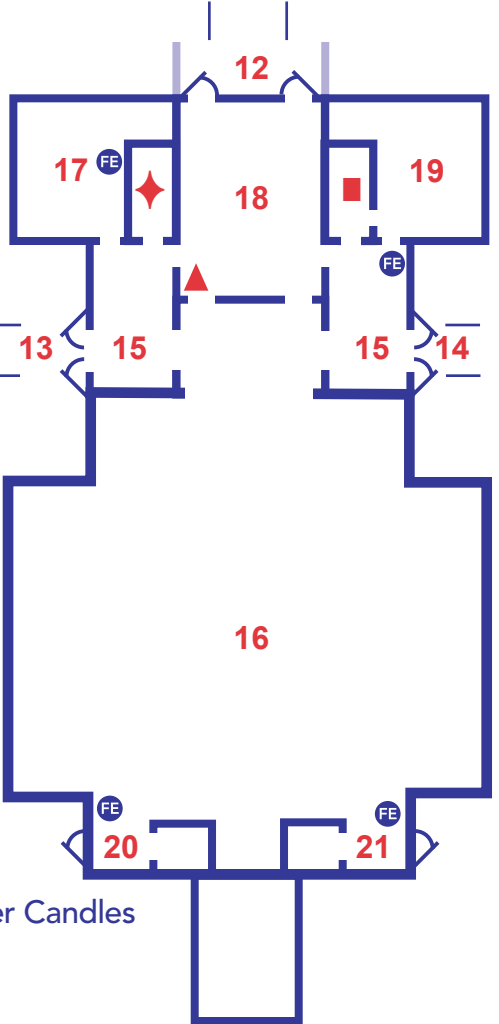
Memorial  
Garden

Fountain



Church & Facilities

- 12. West Entrance
- 13. South Entrance
- 14. North Entrance
- 15. Foyer
- 16. Worship
- 17. Parish Offices
- 18. Sprague Room
- 19. Kramer Room
- 20. Chapel
- 21. Healing Chapel/Prayer Candles
- Women's Restroom
- ◆ Men's Restroom
- FE Fire Extinguisher
- ▲ AED (Automated External Defibrillator)



1737 Hillandale Road Durham, NC 27705